

# SURGICAL (IMMEDIATE) WORKFLOW

## DENTULOUS PATIENT - CHAIRSIDE CHECKLIST

### PRE-OP APPOINTMENT

(2 Weeks Prior to Surgery)

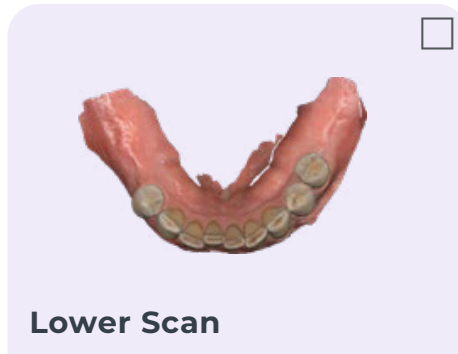
#### Pre-Op Total:

Single/Dual Arch: 2 Photos,  
3 Scans

#### PHOTOS REQUIRED

- Upright, Full-Face Relaxed Bite Smile
- Upright, Full-Face Relaxed Bite Smile + Retractors

### FOUNDATION SCANS - EXISTING DENTITION



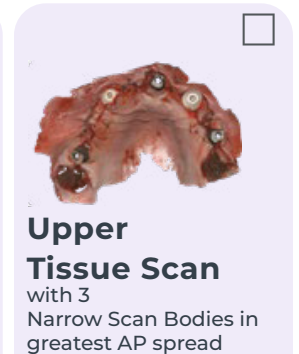
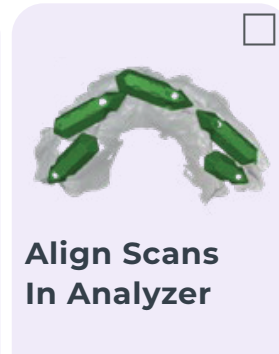
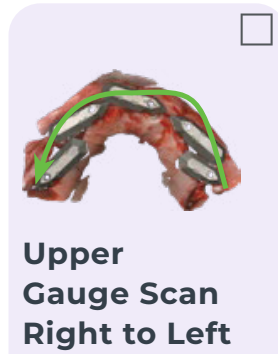
### SURGERY DAY

#### UPPER ARCH

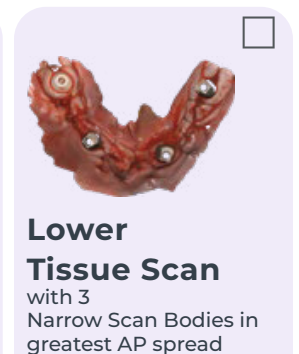
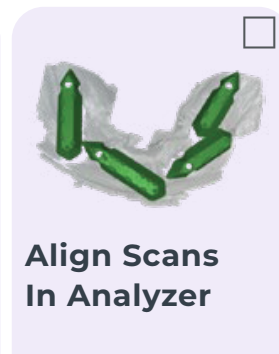
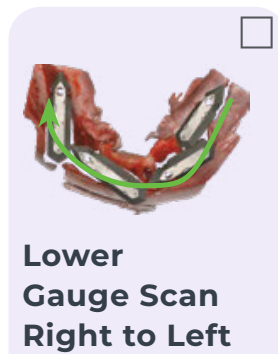
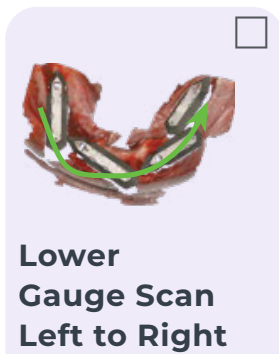
#### Surgery Day Total: Single

Arch: 4 Scans

Dual Arch: 8 Scans



#### LOWER ARCH



Note: When exporting finalised scans, Primescan does not export a separate bite STL/PLY.

Version 3.0 Effective from 03/07/2025

Document ID: ART-024-1 A5

# SURGICAL (IMMEDIATE) WORKFLOW

## EDENTULOUS PATIENT - CHAIRSIDE CHECKLIST

### PRE-OP APPOINTMENT (2 Weeks Prior to Surgery)

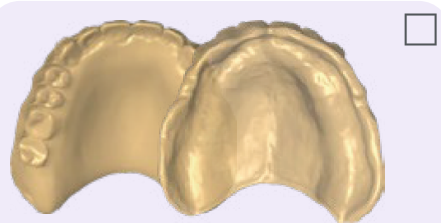
#### PHOTOS REQUIRED

- Upright, Full-Face Relaxed Bite Smile, with Wash
- Upright, Full-Face Relaxed Bite Smile, with Wash + Retractors

#### Pre-Op Total:

Single/Dual Arch: 2 Photos,  
3 Scans

#### FOUNDATION SCANS with Wash Impression



Upper Scan 360° or upper dentition



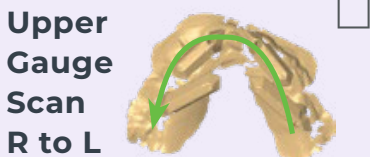
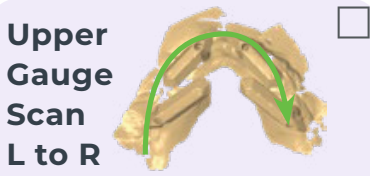
Lower Scan 360° or lower dentition



Bite Scan with wash impression

### SURGERY DAY

#### SCAN GAUGE SCANS



Align Scans in Analyzer



Align Scans in Analyzer

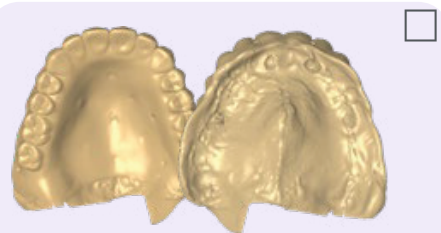
#### Surgery Day Total:

Single Arch: 2 Photos, 5 Scans  
Dual Arch: 2 Photos, 7 Scans

#### PHOTOS REQUIRED

- Upright, Full-Face Relaxed Bite Smile, with Wash
- Upright, Full-Face Relaxed Bite Smile, with Wash + Retractors

#### SURGICAL SCAN TEMPLATE (SST) SCANS with Wash Impression



Upper SST 360° or upper dentition



Lower SST 360° or lower dentition



Bite Scan with wash impression

Note: When exporting finalised scans, Primescan does not export a separate bite STL/PLY.

Version 3.0 Effective from 03/07/2025

Document ID: ART-024-1 A5

# RESTORATIVE (FINAL) WORKFLOW

## SCREW-RETAINED PROVISIONAL - CHAIRSIDE CHECKLIST

### ONE APPOINTMENT

**Total Scans:**


Single Arch: 2 Photos, 7 Scans

Dual Arch: 2 Photos, 11 Scans


#### PHOTOS REQUIRED

- Upright, Full-Face Relaxed Bite Smile
- Upright, Full-Face Relaxed Bite Smile + Retractors


#### FOUNDATION SCANS - WITH EXISTING PROSTHESIS




**Upper Dentition/  
Prosthesis**





**Lower Dentition/  
Prosthesis**





**Bite Scan with  
Prosthesis**


#### UPPER ARCH





**Upper Gauge  
Scan L to R**





**Upper Gauge  
Scan R to L**




**Align Scans  
in Analyzer**





**Upper Tissue  
Scan**  
with 3 Narrow Scan  
Bodies in greatest AP  
spread





**Upper  
Prosthesis  
360°**  
with 4 Scan Analogs in  
greatest AP spread


#### LOWER ARCH





**Lower Gauge  
Scan L to R**





**Lower Gauge  
Scan R to L**




**Align Scans  
in Analyzer**




**Lower Tissue  
Scan**  
with 3 Narrow Scan  
Bodies in greatest AP  
spread




**Lower  
Prosthesis  
360°**  
with 4 Scan Analogs in  
greatest AP spread

Note: When exporting finalised scans, Primescan does not export a separate bite STL/PLY.

Version 3.0 Effective from 03/07/2025

Document ID: ART-024-1 A5

# RESTORATIVE (FINAL) WORKFLOW

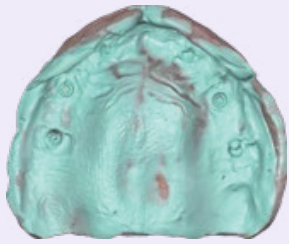
## DENTURE - CHAIRSIDE CHECKLIST

### ONE APPOINTMENT

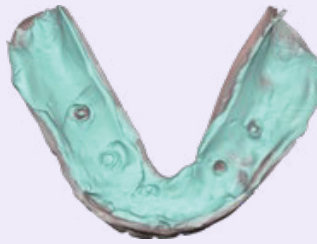
**Total Scans:** Single Arch: 2 Photos, 6 Scans  
Dual Arch: 2 Photos, 9 Scans

#### PHOTOS REQUIRED

- Upright, Full-Face Relaxed Bite Smile, with Wash
- Upright, Full-Face Relaxed Bite Smile, with Wash + Retractors



**Upper Denture 360°  
or upper dentition**

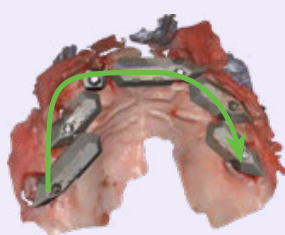


**Lower Denture 360°  
or lower dentition**

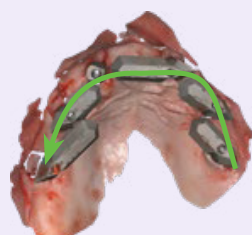


**Bite Scan stabilized  
with wash impression**

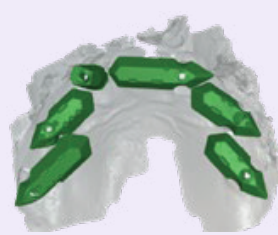
#### UPPER ARCH



**Upper  
Gauge Scan  
Left to Right**



**Upper  
Gauge Scan  
Right to Left**

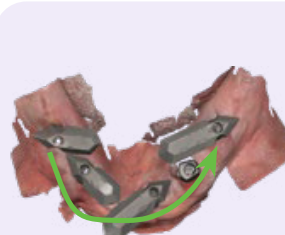


**Align  
Gauge Scans  
in Analyzer**



**Upper Tissue  
Scan**  
with 3 Narrow Scan Bodies  
in greatest AP spread

#### LOWER ARCH



**Lower  
Gauge Scan  
Left to Right**



**Lower  
Gauge Scan  
Right to Left**



**Align  
Gauge Scans  
in Analyzer**



**Lower  
Tissue Scan**  
with 3 Narrow Scan Bodies  
in greatest AP spread

Note: When exporting finalised scans, Primescan does not export a separate bite STL/PLY.

Version 3.0 Effective from 03/07/2025

Document ID: ART-024-1 A5